

EddSON

Willow Cricket Scorebook



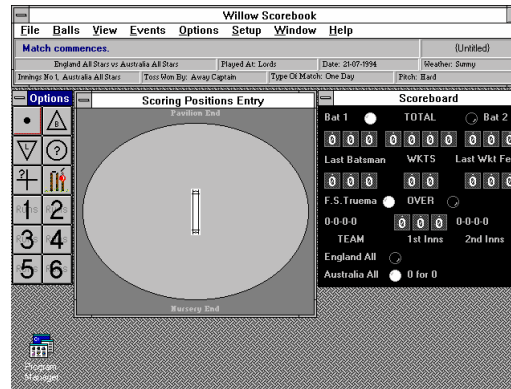
An Innovation In Cricket Scoring For Personal Computers

The Willow Cricket Scorebook is the quickest, easiest and most comprehensive method of cricket scoring. It has been designed to cater for the needs of both novice and experienced scorers.

By utilising the flexibility and ease of use of the Microsoft Windows™ environment the Willow Cricket Scorebook provides features not found in any other computer based scoring package.

The Willow Cricket Scorebook automates the scoring process allowing you to concentrate on the game in the knowledge that your scorebook is accurate. All common scoring events are recorded by one key press or one click of the mouse. This is achieved using the Options Palette, a window of icons representing a dot ball, byes, leg byes, runs, wickets, no balls and wides. To record one run simply click the one run icon and watch as all the analysis windows update automatically.

You can see as much or as little detail as you need during the scoring process. Analysis windows are available for Batting, Bowling, Over, Fall Of Wicket, Scoreboard, Radial Charts, Run Rate Graph, Match Summary and Score Sheet. Each can be turned on or off at any time. In the example below the Options Palette is displayed on the left, the Scoring Positions Window in the middle and the Scoreboard to the right. You can position windows anywhere on the screen providing a truly customisable scorebook.



Willow Cricket Scorebook is very flexible. It supports limited and unlimited over Cricket, One & Two innings matches, From 5 to 15 players per team plus substitute, No Ball penalties of value one and two, Matches can be saved, loaded and exported for later analysis or imported into Cricket Statistics for Windows to provide a total scorers/statistisions solution, mistakes can be corrected using the Undo facility, Innings can be suspended for Rain, Light, Lunch, Tea, Drinks and other unforeseen circumstances, Match results can be calculated automatically, Times can be recorded automatically or manually, Batsmen and Bowlers can be automatically selected, Overs can be ended automatically.

Willow Cricket Scorebook is also comprehensive. Captains and Vice Captains can be recorded, Byes and Leg Byes are indicated in the Bowlers analysis, Radial Charts can be produced indicating where every ball was hit and every run scored, Recording of Weather & Pitch condition for each innings, Supports Local Customs, Match & Innings Notes, Bowler and Batsman Retirements (Out and Not Out), All match analysis can be printed using standard Windows printer drivers.

Willow Cricket Scorebook is installed from two disks, includes manual, registration information, tutorial and work book files, comprehensive On-line help which includes the Laws Of Cricket, How To Guide and Technical Product details.

System Requirements

To run Willow Scorebook, you will need the following hardware and software installed in your laptop or desktop computer :-

- Any IBM compatible PC with an 80386 processor or higher.
- A hard disk with 8Mb free space.
- A 3½" high density floppy disk or CD-ROM drive
- A VGA, 8514, SVGA, XGA or compatible display.
- 64Mb of RAM memory.
- A mouse or tracker ball device (Recommended but not essential)
- Microsoft Windows™ 98, ME, NT, 2000, XP

The Extended Options Icon Palette



The Willow Scorebook is available from :

**EddSON,
23 Lyme Road,
Crewkerne,
SOMERSET. TA18 8HE
ENGLAND.
Tel & Fax: (+44) 01460-74002**

www.eddson.com

@ £49 per copy inclusive of VAT & UK Delivery.

The Message Area

As you select options and record events in the scorebook the message area tells you what has been done.

The Main Menu

The control centre for Willow Scorebook provides drop down menu's to record events and manipulate the analysis windows. It also displays key match information.

The Match File Name

When you save a match you give it a file name. This name is displayed here.

The Options Palette

This is the vertical Option Palette providing you with twelve icons for recording the progress of your match. The icons represent a Dot Ball, Bye, Leg Bye, Single No Ball, Single Wide, A Wicket and One to Six Runs. The Extended Option Palette contains thirty six options so that you can record virtually every scoring event with one click of the mouse or press of a key.

no	Batsmen	How Out	Fielder	Bowler	Runs
1	D.C.Boon	Not Out			10
2	D.G.Bradman	Bowled		F.S.Trueman	10
3	(C) G.S.Chappell	Caught	D.I.Gower	R.Illingworth	7
4	A.R.Border	Not Out			0
5	S.J.McCabe				
6	A.R.Morris				
7	(K) R.W.Marsh				
8	R.Benaud				
9	C.V.Grimmett				
10	H.Trumble				
11	R.R.Lindwall				

	1	2	3	4	5	6	7	8	9	10
Batsman	2	3								
Partnership	15	21								
Over	5	12								
Score	15	36								

	Extras	Total
	9	36

	Overs	Maidens	Runs	Wickets
F.S.Trueman	5	0	10	1
I.T.Botham	5	1	17	0
D.L.Underwood	1	1	0	0
R.Illingworth	1	0	5	1

Batting Summary Window

Just one of the eleven analysis windows which can be displayed on the screen. Each window can be repositioned to allow you to create your ideal scorebook.

Fall Of Wickets Window

Analysis Windows can be overlaid on top of other windows allowing you to make use of your display area.

Bowling Summary Window

A summary of the current innings bowling analysis. The Bowling Detail window displays every ball bowled and is complemented by the Batting Detail Window which records every ball each batsmen has received.